



To all purchasers, inventors, producers, engineers,
visionaries, developers, manufacturers and quality officers:

WE ARE READY!

ED-GROUP

DISTRIBUTION

QUALITY

**EXCESS
INVENTORY
XSI[®]**

**SPECIAL
PROCUREMENT**

INSPECTION



ED-GROUP



MUNICH, DE (HQ)
Since 1995

- ✓ Sales
- ✓ Procurement
- ✓ Inspection
- ✓ Warehouse

- ✓ 50+ employees
- ✓ 20% engineers
- ✓ 80m+ USD revenue in 2022
- ✓ 7 global locations
- ✓ >25k shipments p.a.

COPENHAGEN, DK
Since 2011

- ✓ Sales
- ✓ Procurement

NEW YORK, US
Since 2002

- ✓ Sales
- ✓ Procurement
- ✓ Warehouse

MONTREAL, CDN
Since 2009

- ✓ Sales
- ✓ Procurement
- ✓ Warehouse

HONG KONG, HKG
Since 2004

- ✓ Warehouse

SHENZHEN, CN
Since 2016

- ✓ Sales
- ✓ Procurement
- ✓ Warehouse

SHANGHAI, CN
Since 2004

- ✓ Sales
- ✓ Procurement





 **ELECTRONIC
DIRECT**

- Distribution
- Excess Inventory
- Inspection
- Sourcing



- Tailor Made Camera Solutions
- Automotive Displays
- Image Data Embedding
- Accessories
- Product Services

 **SYSTEMS**

- System Solutions
- Customer Specific Solutions
- Service & Maintenance
- Spare Parts

 **IT-SOLUTIONS**

- IT-Service
- Web-Programming
- IT-Organisation
- DB-Programming



DISTRIBUTION



Distribution

- Worldwide network, franchised and independent, stable supply chain
- Goal: Best prices and stable support of your business
- C-Parts management

Competitive Sourcing

- Project based cost optimization and analysis of your BOM
- Goal: Price optimization of your project

Projects

- Verification of new manufacturers and products for your project
- Goal: Project optimization (Costs/Performance).



QUALITY



QUALITY

OUR TOOLS



Digital microscopy (x1,000)



X-RFI



Functional testing



X-RAY

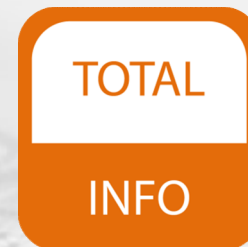




QUALITY

HOW WE WORK

- communication
- supplier rating
- qualified offers
- 100% of deliveries documented
- electronic inspection reports
- clear processes
- excellent service





EXCESS INVENTORY
XSI®

Immediate purchasing

- Purchase of your excess stock in a single lot
- Immediate payment

Classic consignment model

- Delivery of your excess stock to ED
- Quarterly settlements for sold goods
- Logistics executed by ED

Virtual consignment

- Like “Classic consignment model”, except:
- The goods remain in your possession until sold

- ✓ Fast and efficient processing
- ✓ Minimal administrative effort
- ✓ Worldwide marketing
- ✓ Fast and efficient logistics
- ✓ Open book policy

The image features a dark red background with a stylized world map. The map is composed of numerous small dots and thin lines connecting them, creating a network-like appearance. The dots are arranged to form the continents, with a higher density of dots in some areas. The word "SOURCING" is written in a bold, white, sans-serif font, centered horizontally and vertically over the map. The overall aesthetic is modern and technological, suggesting a global supply chain or sourcing theme.

SOURCING

- Sourcing of hard-to-find electronic components
- Obsolescence Management (OM)
- SupplyOn, VMI





INSPECTION



Level 1:
Visual Inspection

Level 2:
Digital Microscopy

Level 3:
X-Ray Inspection

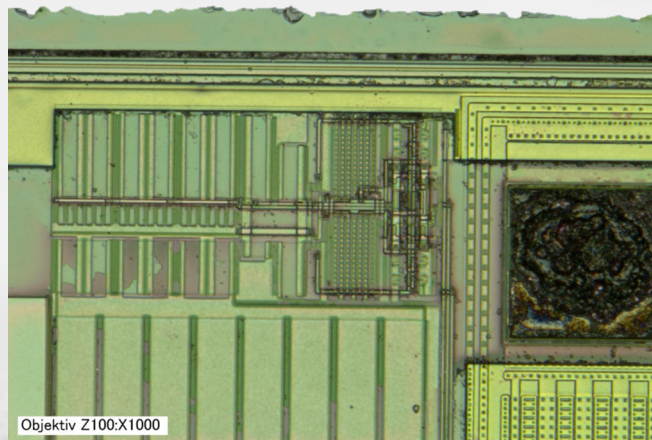
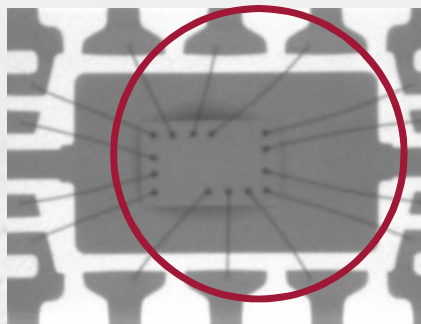
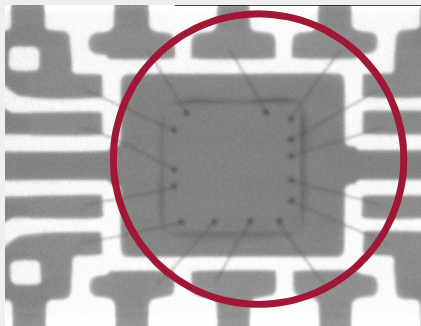
Level 4:
Decapsulation

Level 5:
Functional testing

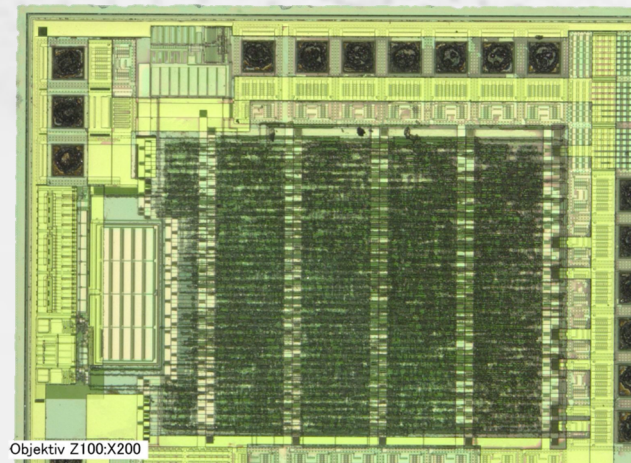
Level 6:
X-RFI & REM-EDX

- ✓ Ensuring quality is the highest priority
- ✓ Regularly trained employees
- ✓ Detailed documentation of the entire supply chain

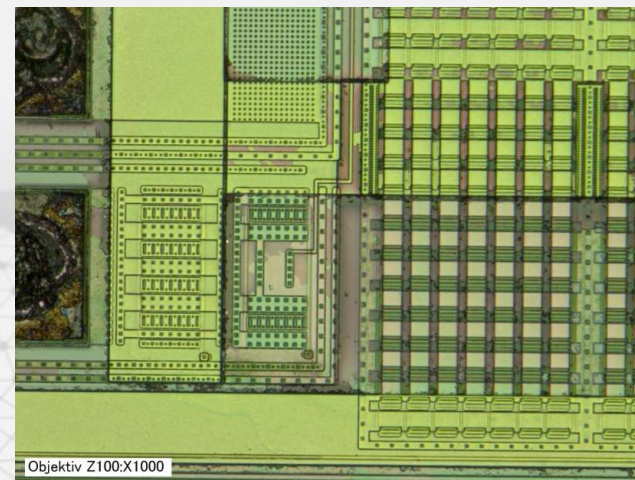




Objektiv Z100:X1000



Objektiv Z100:X200

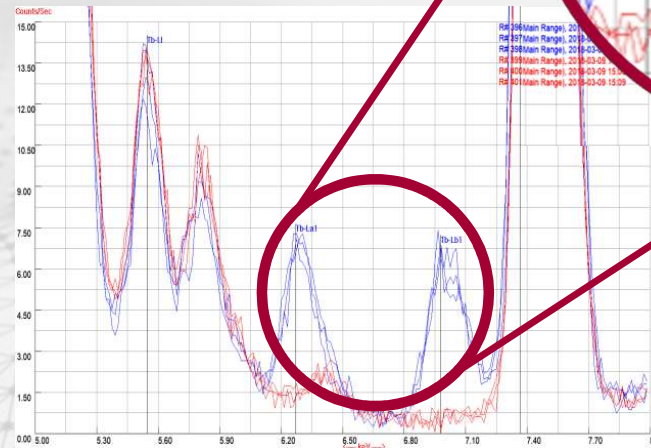


Objektiv Z100:X1000

Incoming Goods Inspection

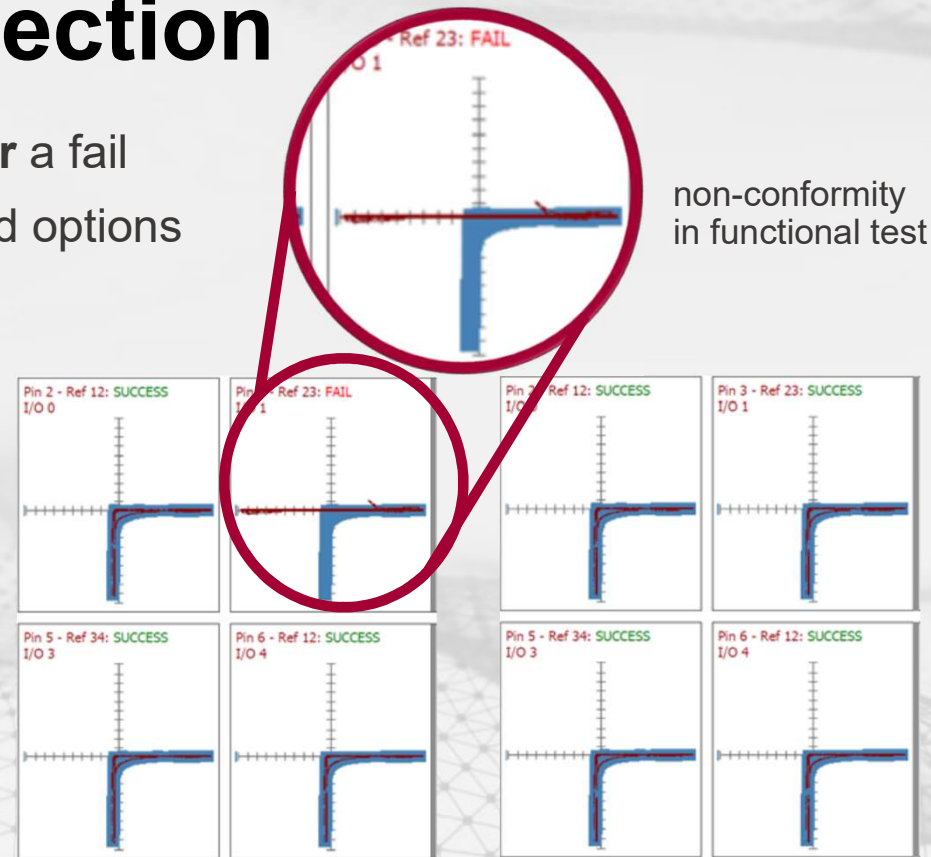
- **Our approach:** Measure, compare, analyse
- **Our task:** Use all necessary tools and options
- X-ray fluorescence (XRF)
- Golden sample

Rare earth metal
missing: Terbium (tb)



Incoming Goods Inspection

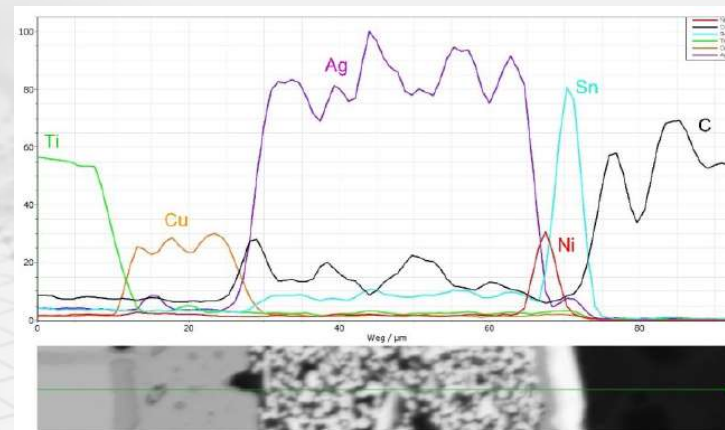
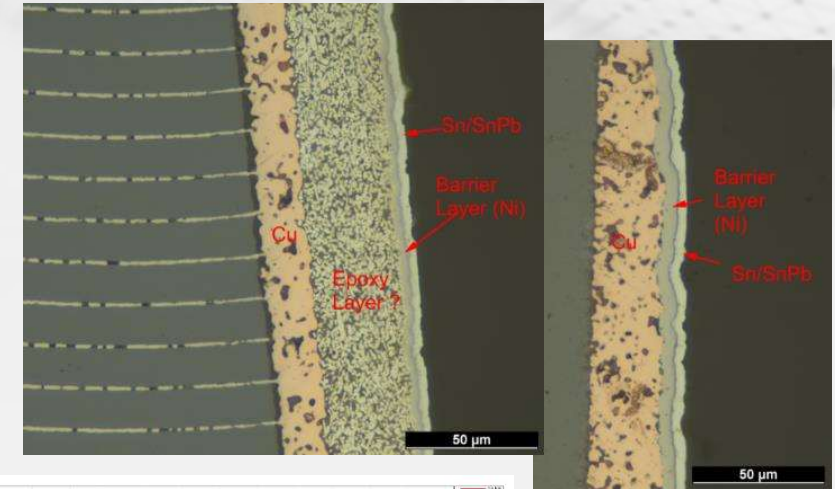
- **Our approach:** Goods are **either** a pass or a fail
- **Our task:** Use all necessary tools and options
- Curve trace testing (golden sample comparison)



Curve traces compared

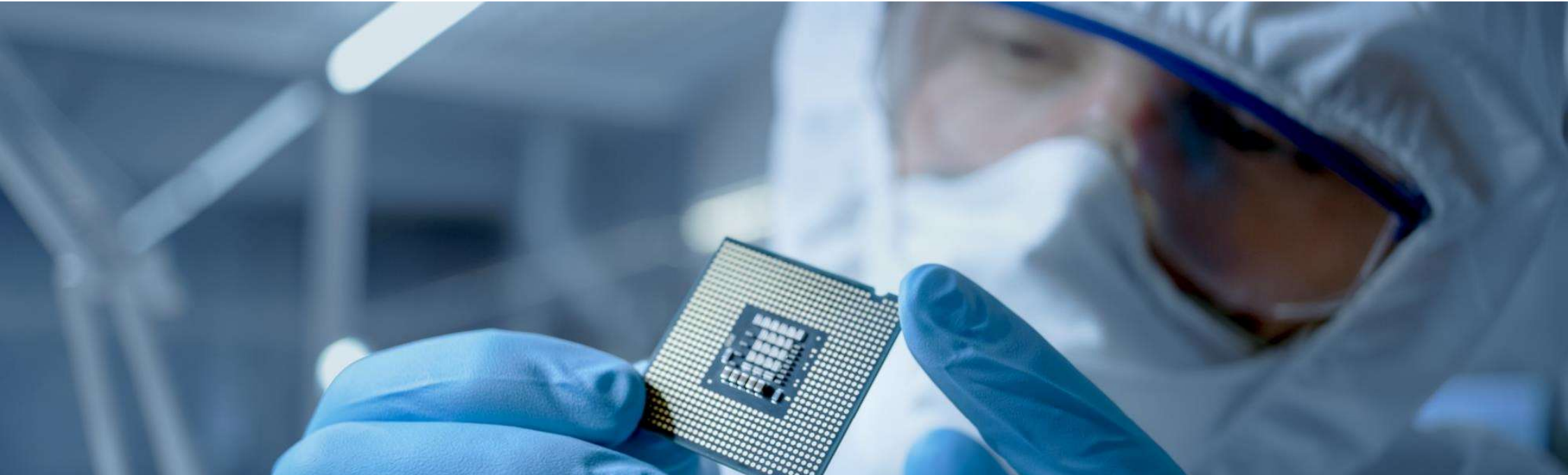
Incoming Goods Inspection

- **Our approach:** Expertise
- **Our task:** Find answers and solutions
- Scanning electron microscope (**SEM**)
- Energy dispersive x-ray spectroscopy (**EDX**)
- Golden sample





**ELECTRONIC
DIRECT**



WE ARE READY!

ARE YOU?